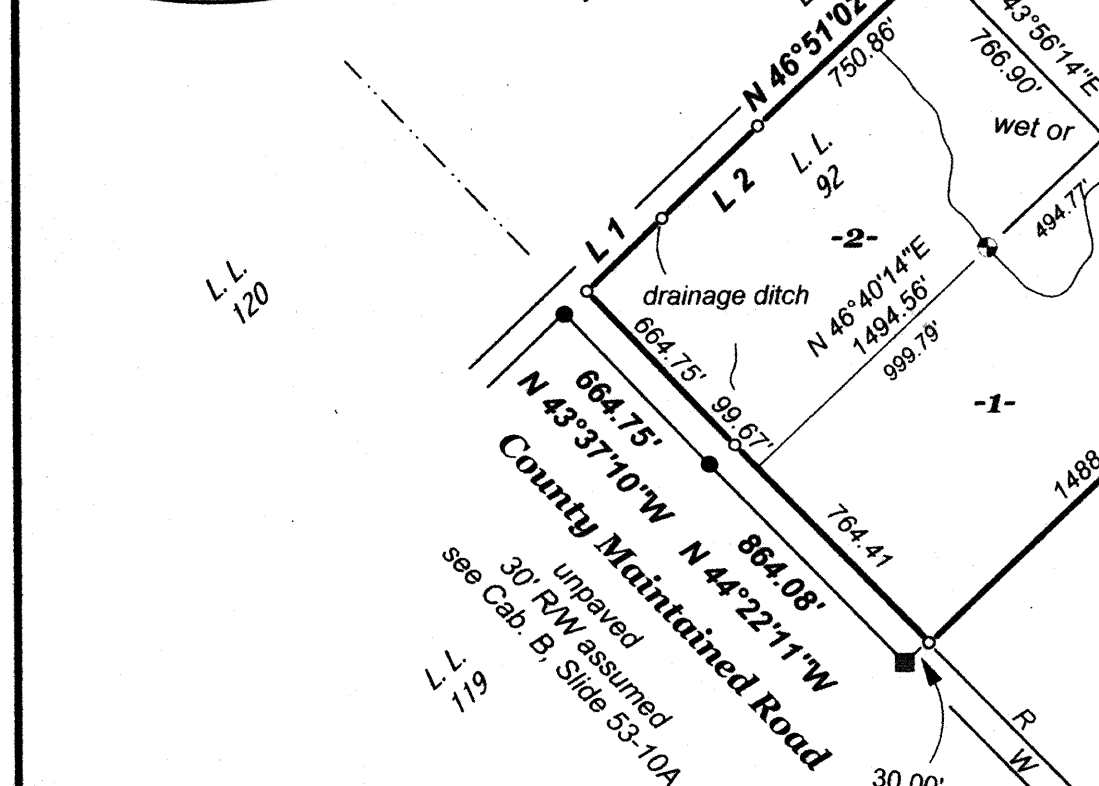
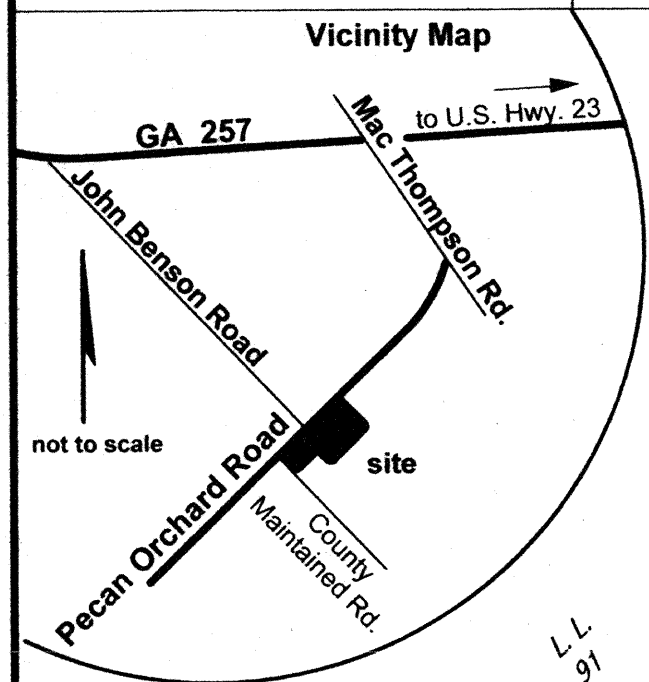


Line	Bearing	Distance	Line	Bearing	Distance
1	N 46°13'31"E	325.97'	29	S 46°32'22"W	300.00'
2	N 46°21'14"E	414.79'	30	S 56°17'16"W	149.20'
3	S 47°20'07"E	187.94'	31	S 75°10'20"W	249.22'
4	S 46°12'41"W	232.13'	32	N 85°44'51"W	80.14'
5	S 46°33'50"W	378.94'	33	N 50°01'52"W	287.76'
6	N 49°35'19"W	4.87'	34	N 54°30'19"W	70.71'
7	N 26°15'38"E	37.79'	35	N 77°50'45"W	51.41'
8	N 25°48'57"W	22.56'	36	S 27°33'43"W	56.24'
9	N 33°54'43"W	49.03'	37	S 27°45'56"W	43.91'
10	N 0°31'24"E	60.94'	38	S 22°18'40"W	119.79'
11	N 5°10'16"E	148.64'	39	N 75°20'37"W	403.05'
12	N 6°28'12"W	31.52'	40	S 75°19'44"W	103.49'
13	N 55°11'37"W	51.18'	41	S 49°43'36"W	119.44'
14	N 86°11'45"W	152.64'	42	S 31°34'38"W	88.06'
15	S 23°02'16"W	271.88'	43	S 31°34'38"W	129.23'
16	S 32°51'56"W	164.33'	44	S 31°17'08"W	146.80'
17	S 42°53'00"W	133.83'	45	S 22°30'23"W	137.60'
18	S 67°23'59"W	361.29'	46	S 11°31'30"W	62.50'
19	S 77°22'12"W	412.30'	47	S 15°04'11"E	94.77'
20	S 43°50'00"E	726.00'	48	S 68°49'07"E	218.05'
21	S 43°50'00"E	726.00'	49	S 37°20'34"E	122.13'
22	S 43°50'00"E	725.40'	50	S 20°49'23"E	197.84'
23	S 43°50'00"E	783.08'	51	S 11°38'14"W	152.89'
24	S 43°50'00"E	783.08'	52	S 27°37'30"W	104.00'
25	S 43°50'00"E	783.08'	53	S 30°18'13"W	130.51'
26	S 43°50'00"E	726.00'	54	S 19°45'26"W	144.94'
27	S 43°50'00"E	726.00'	55	S 14°27'27"E	310.74'
28	S 43°00'46"W	308.31'	56	S 12°14'42"E	173.00'

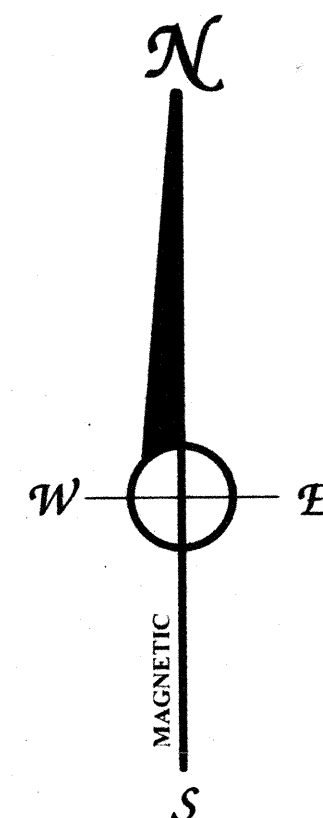


LEGEND:

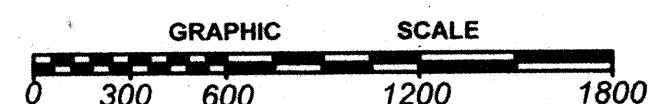
- = EXISTING 5/8" REBAR
- = 5/8" REBAR SET
- = EXISTING CONCRETE MONUMENT
- = CONCRETE MONUMENT SET
- = CENTER PUMPING STATION
- = POWERLINE
- - - = FENCE
- = NOT TO SCALE
- P.O.B. = POINT OF BEGINNING
- P.O.R. = POINT OF REFERENCE
- L.L. = LAND LOT
- L.L.L. = LAND LOT LINE

Pecan Ridge

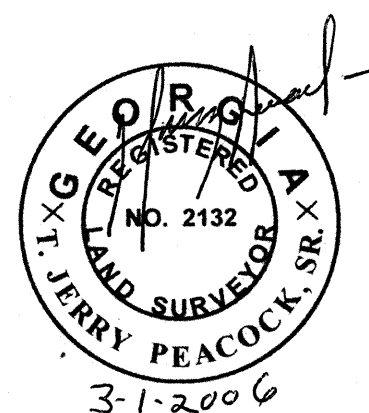
Acreage Table			
Lot 1	26.15 Ac.	Lot 16	5.00 Ac.
Lot 2	26.32 Ac.	Lot 17	5.00 Ac.
Lot 3	26.17 Ac.	Lot 18	5.00 Ac.
Lot 4	26.08 Ac.	Lot 19	5.00 Ac.
Lot 5	25.97 Ac.	Lot 20	5.00 Ac.
Lot 6	25.79 Ac.	Lot 21	5.00 Ac.
Lot 7	25.50 Ac.	Lot 22	20.69 Ac.
Lot 8	5.00 Ac.	Lot 23	12.78 Ac.
Lot 9	5.00 Ac.	Lot 24	24.10 Ac.
Lot 10	5.00 Ac.	Lot 25	26.02 Ac.
Lot 11	5.00 Ac.	Lot 26	17.27 Ac.
Lot 12	5.00 Ac.	Lot 27	15.95 Ac.
Lot 13	5.00 Ac.	Lot 28	15.34 Ac.
Lot 14	5.00 Ac.	Lot 29	25.00 Ac.
Lot 15	5.00 Ac.		



- NOTES:
- 1 - Acreage includes powerline right of way easement.
 - 2 - Concrete monuments set on all lots corners unless otherwise shown.
 - 3 - A 30' ingress/egress easement is required to access Lots 4, 6 and 7.



Reference Plat:
P.B. 3, P. 103



FIELD DATA UPON WHICH THIS PLAT IS BASED HAS A CLOSURE PRECISION OF 1 FOOT IN 34,124 FEET, AND AN ANGULAR CLOSURE OF 4" PER ANGLE POINT, AND WAS ADJUSTED USING COMPASS RULE.

THIS PLAT HAS A CLOSURE PRECISION OF ONE FOOT IN 345,516 FEET.

EQUIPMENT USED: SOKKIA SET 5A

T. JERRY PEACOCK, SR., G.R.L.S. NO. 2132

SUBDIVISION FOR	
Columbia Investors, L.L.C.	
Land Lots 62, 89, and 92, 20th Land District Bleckley County, Georgia	
SCALE: 1" = 600'	DATE: 3-1-2006
Peacock Surveys 208 CHERRY STREET COCHRAN, GA. (478) 934-8325 L0608	